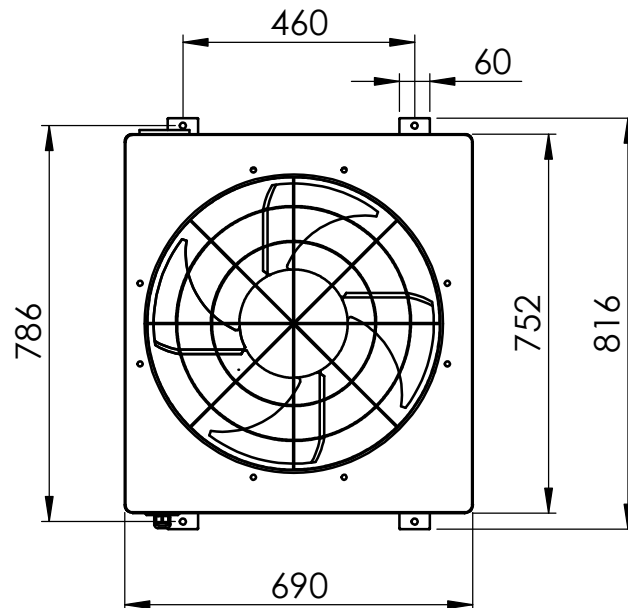
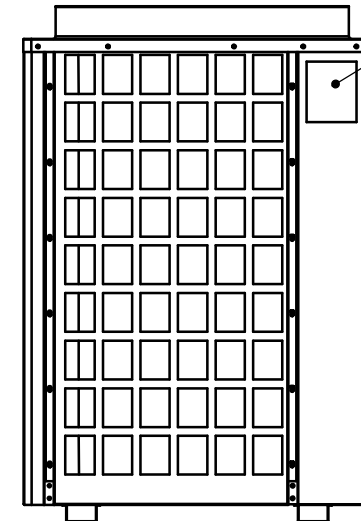
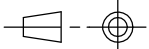



Thermostat :  
- Fixed  
- Remote Controllable (wire length: 12m)



Dimensions	816mm x 690mm x 1050mm (h)
Weight	130 kg
Power Consumption (Cooling)	6890 W
Power Consumption (Heating)	4100 W
Minimum Water Flow	6500 l/h
Air Flow	7000 m <sup>3</sup> /h
Maximum Exchanger's Pressure	2 bar
Ambient temperature range	5°C - 38°C
Cooling Capacity	15 kW (other details on request)

Material:		Drawing: TK 15K – Technical data		
Thickness:		File: TK 15K_technical_drawing		
Finishing:		Your.code:		Code:
Volume:		Tol.	Scale: 1:15	Date: 20/05/2014
Approved:		Via A.Sansovino, 35		
		48124 RAVENNA – ITALY		
		Tel. +39 0544 408333 Fax 280084		
		<a href="http://www.teconline.com">http://www.teconline.com</a>		
Drawer:				
Matteo				

AS BY LAW ENACTED WE RESERVE US THE PROPERTY OF THIS DOCUMENT WITH THE PROHIBITION OF REPRODUCE IT, SAVE IT INTO ARCHIVES SYSTEM, GIVE IT OR HOWEVER LENT IT TO THIRD PARTY WITHOUT OUR AUTHORIZATION. EVERY VIOLATION INVOLVES THE COMPENSATION FOR THE UNDERGONE DAMAGES.WE MAKE RESERVATIONS ABOUT ALL THE RIGHTS DERIVING FROM PATENTS OR MODELS.